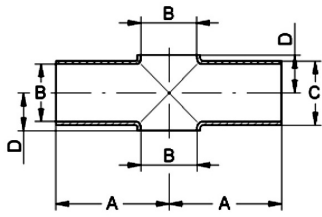
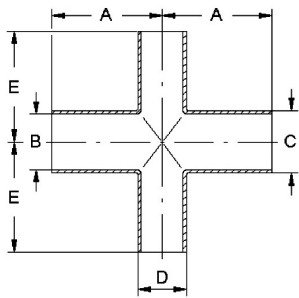


Aseptic fittings for Orbital welding DIN 11865						Art.No	EUR	Art.No	EUR
Cross piece ISO, short, H3	DN	A	B	C	D			AISI316L-1.4435	
	80	130	84,3	88,9	49,5			489538	Enquiry
	100	160	109,7	114,3	63			489539	Enquiry



Similar to DIN 11865

Reducing cross piece DIN, H3	DN	A	B	C	D	E			AISI316L-1.4435	
	15-10	35	16	19	13x1,5	35			489659	Enquiry
20-10	40	20	23	13x1,5	40			489660	Enquiry	
20-15	40	20	23	19x1,5	40			489661	Enquiry	
25-10	50	26	29	13x1,5	50			489662	Enquiry	
25-15	50	26	29	19x1,5	50			489663	Enquiry	
25-20	50	26	29	23x1,5	50			489664	Enquiry	
32-15	55	32	35	19x1,5	55			489665	Enquiry	
32-20	55	32	35	23x1,5	55			489666	Enquiry	
32-25	55	32	35	29x1,5	55			489667	Enquiry	
40-15	60	38	41	19x1,5	60			489668	Enquiry	
40-20	60	38	41	23x1,5	60			489669	Enquiry	
40-25	60	38	41	29x1,5	60			489670	Enquiry	
40-32	60	38	41	35x1,5	60			489671	Enquiry	
50-15	80	50	53	19x1,5	80			489634	Enquiry	
50-20	80	50	53	23x1,5	80			489635	Enquiry	
50-25	80	50	53	29x1,5	80			489672	Enquiry	
50-32	80	50	53	35x1,5	80			489673	Enquiry	
50-40	80	50	53	41x1,5	80			489674	Enquiry	
65-25	105	66	70	29x1,5	80			489675	Enquiry	
65-32	105	66	70	35x1,5	80			489676	Enquiry	
65-40	105	66	70	41x1,5	80			489677	Enquiry	
65-50	105	66	70	53x1,5	80			489678	Enquiry	
80-25	130	81	85	29x1,5	105			489679	Enquiry	
80-32	130	81	85	35x1,5	105			489680	Enquiry	
80-40	130	81	85	41x1,5	105			489681	Enquiry	
80-50	130	81	85	53x1,5	105			489682	Enquiry	
80-65	130	81	85	70x1,5	105			489683	Enquiry	
100-50	155	100	104	53x1,5	130			489684	Enquiry	
100-65	155	100	104	70x1,5	130			489685	Enquiry	
100-80	155	100	104	85x1,5	130			489686	Enquiry	



Similar to DIN 11865